

Accessories

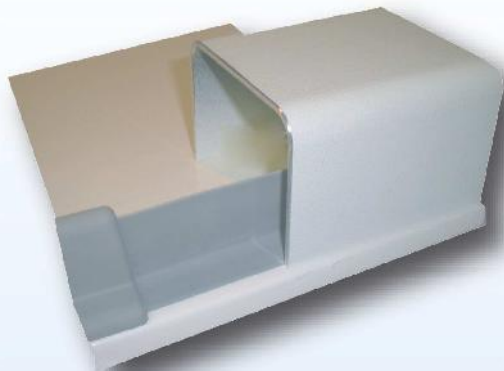
THE WATERSTOPPER - THE COLLAPSIBLE WATER RETAINER and **SEMI-PERMANENT THRESHOLD**

Collapsible Water Retainer

Made of heavy gauge EPDM rubber to create a "T" shaped curb that stands up to water yet compresses under foot or wheel. WaterStoppers are available in either grey or beige and are cut to fit on site and installed with peel and stick adhesive and provided end caps.

KTWSB3S	Color	Length	End Caps
K TWS	B for Beige	3 (36 in)	S - Small
Kit T-Water Stopper	G for Grey	4 (48 in)	L - Large
		5 (60 in)	U - Both
		6 (72 in)	
		10 (120 in)	

Up to 36 in. KTWS(B/G)3(S/L/U)
Up to 48 in. KTWS(B/G)4(S/L/U)
Up to 60 in. KTWS(B/G)5(S/L/U)
Up to 72 in. KTWS(B/G)6(S/L/U)
Up to 120 in. KTWS(B/G)10(S/L/U)



Semi-Permanent Threshold

These are custom made to fit each unit. They are constructed of heavy gauge aluminum and powder coated to match the unit. They are built to snugly fit the unit and be siliconed in place. They are strong enough to hold a traditional glass shower door.

Combine both for maximum flexibility

These two options ordered together with a Barrier Free shower offer the best and most flexible water retention system on the market. The semi-permanent threshold is installed over the WaterStopper. This gives the shower a standard threshold look and allows the installation of a glass shower door.

When necessary, the shower door and the semi-permanent threshold can be easily removed, leaving an accessible low threshold shower with a water retainer in place. The addition of a heavy duty weighted shower curtain completes the water retention system.

As conditions change you can replace the threshold over the WaterStopper, reinstall the shower door and you again have a traditional shower.