

IMPORTANT INSTALLATION and OPERATING INSTRUCTIONS

**The ADL Spa Bathtub with
Manual Control System
Model ADLE6035, ADLB6035, & ADLS6035**

To be provided to the Best Bath Systems ADL Spa installer and owner/user

INSTALLATION INSTRUCTIONS TO BE REMOVED FOR USE BY THE OCCUPANT

**FOR INDOOR USE ONLY
UTILISER A L'INTERIEUR SEULEMENT**

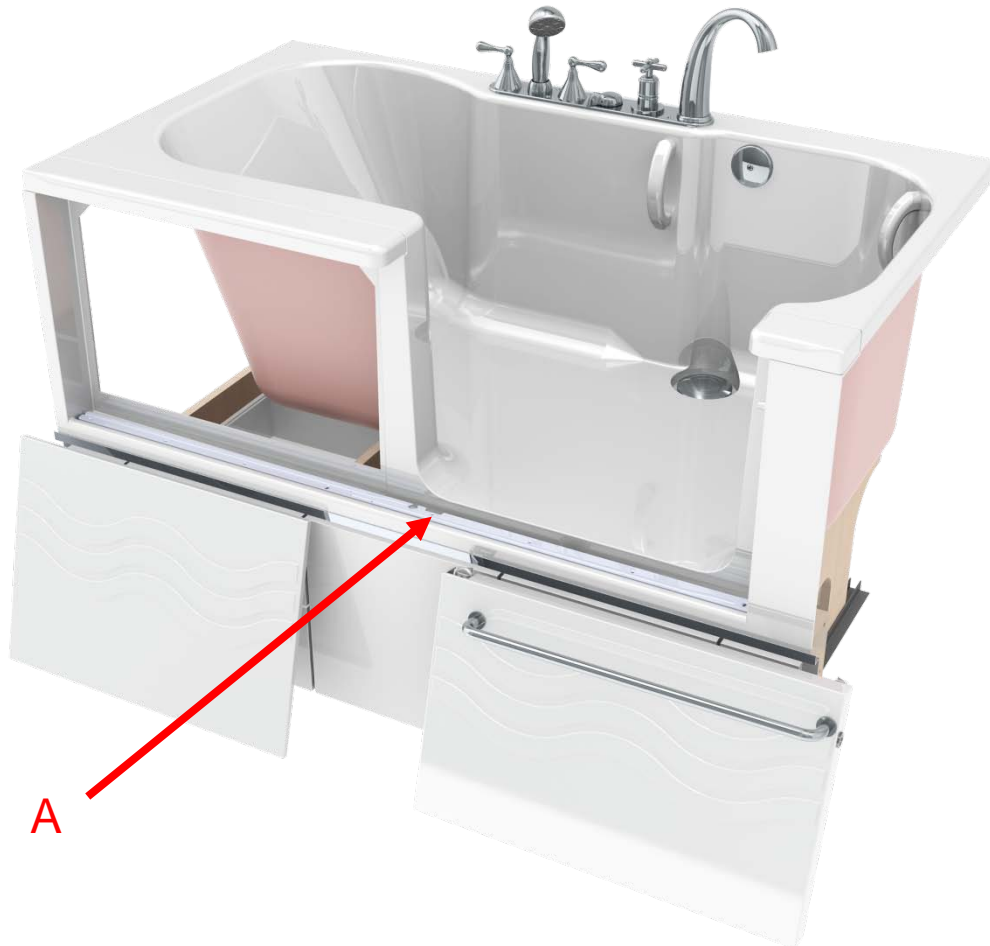
RECEIVING AND UNCRATING

1. Inspect the packaging for damage that may affect the contents from the carrier. Uncrate the bathtub and cabinet base, and inspect it for damage. If damage is found, file a claim with the freight carrier immediately, and notify Best Bath Customer Service within five (5) business days.
2. The bathtub is supported by four 2x4s, but it is only screwed to the outer two. These outer 2x4s are also screwed to the pallet. Remove the pallet from the supports, but do not remove the supports from the tub until it is ready to install on the cabinet base.
3. Remove the door and access panel, and put them in a safe place so that they do not get damaged during installation. Flat head and Phillips head screwdrivers required.

The door can be removed when it is nearly in the fully open position. It has a hooking track-guide that must be lined up with the slot in the track shown below (A). Once aligned, use a flat head screwdriver to press down on the wheel on the top of the door (B). Once it is down and disengaged from the upper track, tip the door forward. Carefully lift the door out. Be careful not to damage the hooking track-guide on the bottom of the door while it is removed as this could greatly impact the performance of the door.



The access panel is attached with four Phillips head screws. Remove and keep in a safe place.



RESPONSIBILITY OF THE INSTALLER

Each tub has been water and full-function tested at the factory. However, the installer must inspect and water test the product prior to installation to ensure the unit is still free from defects or damage after shipment. In the event of a problem, this unit must not be installed. If the crate or product has been damaged, please contact us at 1-866-433-6650 after initiating a claim with the freight carrier.

This product complies with many internationally recognized standards. You are responsible for compliance with any local codes that may apply.

This product is designed to be installed by a licensed tradesperson. Licensed plumbers and electricians should be used to ensure proper installation. Installers assume all liability for the correct installation procedures. Licensed tradespersons may call 1-866-433-6650 with installation questions.

USE ONLY MANUFACTURER AUTHORIZED ACCESSORIES WITH THIS PRODUCT.

DO NOT LIFT THE BATHTUB BY THE PLUMBING FIXTURES, THE DOOR, OR TOP FRONT EDGE ABOVE THE DOOR. Doing so can result in personal injury or damage resulting in leaks for which the installer is responsible.

Remove all packing material before installing. Take care not to scratch or damage the tub surface when handling.

TEST THE ADL SPA BATHTUB BEFORE INSTALLATION.

All ADL Spa bathtubs are 100% water tested at the factory. However, transportation and poor handling may cause leaks. It is necessary to fill and test any jet systems and the door on the bathtub for leaks before installing to prevent water damage.

1. To test for water leaks, place the unit outside on a flat surface where it may be drained after testing and fill with a garden hose. Seal the drain (tape can be used for the test). Fill the bathtub above the jets or at least 14". Let the water stand in the tub for 10 minutes and then inspect all plumbing and seals for leaks.
2. Using an extension cord, operate each pump (air and hydro system, if applicable) for 10 minutes and inspect for leaks. Inspect the unions around the pump; if leaks persist from the unions after tightening, loosen the unions and ensure that the O-ring is seated properly. Ensure all jets are open and working.

If there are leaks, call Best Bath Systems warranty department 1-866-433-6650 for further instructions. Often leaks can be fixed with Teflon Tape and pipe thread sealant.

If the pumps do not operate; check the breaker to make sure the power is on and that the cable connecting the controls to the pump is attached. Also make sure that there is sufficient water in the pump—the water pump will not operate without sufficient water. Damage to the pumps due to dry running is not covered under warranty.

FAILURE TO PERFORM THESE TESTS BEFORE INSTALLATION MAY RESULT IN FAILURE NOT COVERED BY WARRANTY. SUCH FAILURES WILL RESULT IN DAMAGES FOR WHICH THE INSTALLER IS LIABLE.

TABLE OF CONTENTS

Receiving and uncrating / door removal	2
Responsibility of the installer	3
Important safety warnings	5
Introduction / About	6
Dimensional drawings	7
Preparing the area	8
Cabinet installation	9
Drain assembly diagram	10
Drain assembly / installation	12
Testing hydromassage system	13
Finishing installation	13
Post-installation cleaning	14
User instructions	15
Hydromassage system operating instructions.....	16
Regular cleaning	17
Warranty	18

INSTRUCTIONS PERTAINING TO A RISK OF FIRE, ELECTRIC SHOCK OR INJURY TO PERSONS

**IMPORTANT SAFETY INSTRUCTIONS
READ AND FOLLOW ALL INSTRUCTIONS**

WARNING: RISK OF ACCIDENTAL INJURY OR DROWNING; CHILDREN SHOULD NOT USE HYDROMASSAGE BATHTUB WITHOUT ADULT SUPERVISION.

WARNING: RISK OF ACCIDENTAL INJURY OR DROWNING; DO NOT USE HYDROMASSAGE BATHTUB UNLESS ALL SUCTION GUARDS ARE INSTALLED TO PREVENT BODY AND HAIR ENTRAPMENT.

WARNING: TO AVOID INJURY, EXERCISE CARE WHEN ENTERING OR EXITING HYDROMASSAGE BATHTUB.

WARNING: RISK OF ACCIDENTAL INJURY OR DROWNING; DO NOT USE DRUGS OR ALCOHOL BEFORE OR DURING THE USE OF A HYDROMASSAGE BATHTUB EQUIPPED WITH HEATER TO AVOID UNCONSCIOUSNESS AND POSSIBLE DROWNING.

WARNING: RISK OF FETAL INJURY; PREGNANT OR POSSIBLY PREGNANT WOMEN SHOULD CONSULT A PHYSICIAN BEFORE USING A HYDROMASSAGE BATHTUB EQUIPPED WITH HEATER.

WARNING: RISK OF HYPERTHERMIA AND POSSIBLE DROWNING; DO NOT USE A HYDROMASSAGE BATHTUB EQUIPPED WITH HEATER IMMEDIATELY FOLLOWING STRENUOUS EXERCISE.

WARNING: RISK OF ELECTRIC SHOCK; DO NOT PERMIT ELECTRIC APPLIANCES (SUCH AS A HAIR DRYER, LAMP, TELEPHONE, RADIO, OR TELEVISION) WITHIN 1.5 M OF THIS HYDROMASSAGE BATHTUB.

CAUTION: TEST THE GROUND FAULT CIRCUIT INTERRUPTER PROTECTING THIS APPLIANCE PERIODICALLY IN ACCORDANCE WITH THE MANUFACTURER'S INSTRUCTIONS.

WARNING: RISK OF HYPERTHERMIA AND POSSIBLE DROWNING; WATER TEMPERATURE IN EXCESS OF 38°C MAY BE INJURIOUS TO YOUR HEALTH. CHECK AND ADJUST WATER TEMPERATURE BEFORE USE.

WARNING: RISK OF HYPERTHERMIA; PEOPLE USING MEDICATIONS AND/OR HAVING AN ADVERSE MEDICAL HISTORY SHOULD CONSULT A PHYSICIAN BEFORE USING A HYDROMASSAGE BATHTUB EQUIPPED WITH HEATER.

NOTE: NEVER DROP OR INSERT ANY OBJECT INTO ANY OPENING. DO NOT OPERATE THIS UNIT WITHOUT THE GUARD OVER THE SUCTION FITTING

**INSTRUCTIONS IMPORTANTES RELATIVES A LA SECURITE
LIRE ET SUIVRE TOUTES LES INSTRUCTIONS**

AVERTISSEMENT: RISQUE DE BLESSURE ET DE NOYADE. NE PAS LAISSER UN ENFANT UTILISER LA CUVE A REMOUS EN L'ABSENCE D'UN ADULTE.

AVERTISSEMENT: RISQUE DE BLESSURE ET DE NOYADE. POUR EVITER LE HAPPEMENT DE MEMBRES OU DE CHEVEX, NE PAS UTILISER LA CUVE A REMOUS SI LES PRISES D'ASPIRATION NE SONT PAS TOUTES MUNIES D'UNE GRILLE.

AVERTISSEMENT: POUR EVITER LES BLESSURES, USER DE PRUDENCE EN ENTRANT DANS LA CUVE A REMOUS ET EN LA QUITTANT.

AVERTISSEMENT: RISQUE DE BLESSURE ET DE NOYADE. NE PAS PRENDRE DE MEDICAMENT NI CONSOMMER D'ALCOOL LORSQU'ON UTILISE UNE CUVE A REMOUS CHAUFFEE OU AVANT D'Y ENTRER AFIN D'EVITER L'EVANOUISSEMENT ET LE RISQUE DE NOYADE.

AVERTISSEMENT: DANGER POUR LE FOETUS. LES FEMMES ENCEINTES, QUE LEUR GROSSESSE SOIT CONFIRMEE OU NON, DEVRAIENT CONSULTER UN MEDECIN AVANT D'UTILISER UNE CUVE A REMOUS CHAUFFEE.

AVERTISSEMENT: RISQUE D'HYPERTHERMIE ET DE NOYADE. NE PAS UTILISER UNE CUVE A REMOUS CHAUFFEE APRES UN EXERCICE INTENSE.

AVERTISSEMENT: RISQUE DE CHOC ELECTRIQUE. NE PAS PLACER D'APPAREILS ELECTRIQUES (LUMINAIRE, TÉLÉPHONE, RADIO, TELEVISEUR, ETC.) A MOINS DE 1,5 M DE CETTE CUVE A REMOUS.

ATTENTION: VERIFIER REGULIEREMENT LE FONCTIONNEMENT DU DISJONCTEUR DE FUITE A LA TERRE CONFORMENT AUX INSTRUCTIONS DU FABRICANT.

AVERTISSEMENT: RISQUE D'HYPERTHERMIE ET DE NOYADE. UNE TEMPERATURE D'EAU SUPERIEURE A 38°C

PEUT PRESENTER UN RISQUE POUR LA SANTE. VERIFIER ET REGLER LA TEMPERATURE DE L'EAU AVANT D'UTILISER LA CAVE.

AVERTISSEMENT: RISQUE D'HYPERTHERMIE. LES PERSONNES QUI PRENNENT DES MEDICAMENTS OU QUI ONT DES PROBLEMES DE SANTE DEVRAIENT CONSULTER UN MEDECIN AVANT D'UTILISER UNE CUVE A REMOUS CHAUFFEE.

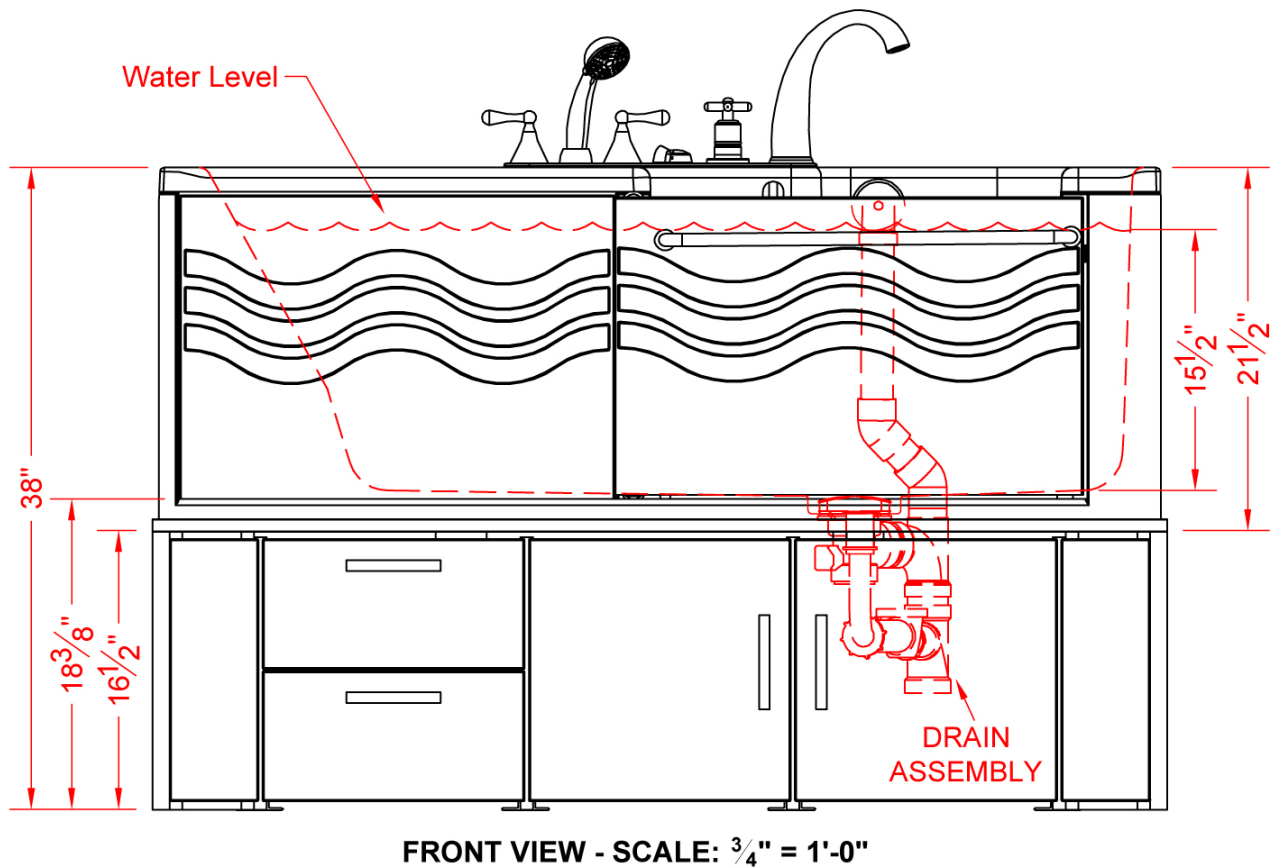
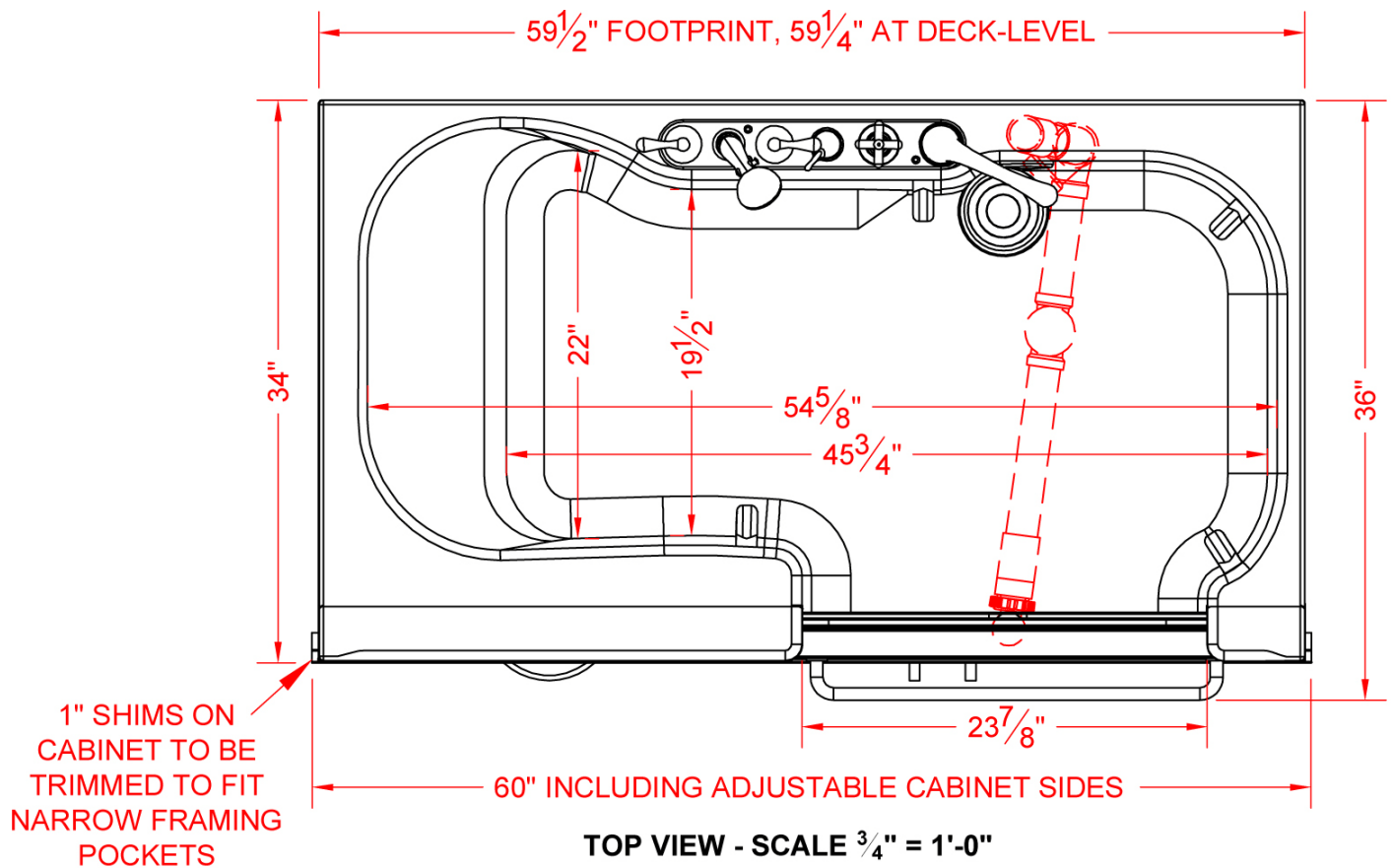
Introduction



SAFETY PLUS

BASIC





SAVE THESE INSTRUCTIONS. CONSERVER CES INSTRUCTIONS.

This hydromassage bathtub may be equipped with a water mixing valve on which
THE DESIRED SETTINGS ARE TO BE COMPLETED BY THE INSTALLER.
Resetting or tampering with the valve mechanism may lead to serious injury.
See Temperature Setting Instructions supplied with the valves.

PREPARING THE AREA

1. Make certain you have a flat surface that can support the combined weight of the bathtub, the water and the user on the cabinet base. No more reinforcement is needed than that for an ordinary bathtub.
2. Make sure the floor of the installation area is clean and level with the surrounding floor area. The cabinet base is open to the floor underneath, so a finished floor is preferred. Use a five foot level and determine if the floor is level.
3. Remove the existing bathtub and the wall and floor materials as required. Make sure the opening for the new bathtub is 60" wide by 35" deep, 40-1/4" high. You will need clearance for the bathtub and enough clear space above deck to maneuver the bathtub into the enclosure.
4. If your space is too narrow (i.e. under 60"), you may need to remove the drywall in the enclosure up to the 40-1/4" height. If required, the wall studs at one or both ends of the bathtub can often be cut and turned 90° to increase the available length to accommodate a 60" bathtub. **Ensure that you do not cut the studs to a load-bearing wall.**
5. The plumbing connections, hot, cold and the drain should be installed to local codes.
6. A licensed plumber shall prepare the hot and cold water supply lines. They will need male 3/4" pipe thread ends (MIP). It is recommended that on/off valves be installed before the 3/4" MIP ends so that the water supply can be easily shut off for maintenance and installation purposes. The cabinet base has clearance of 15" from the floor on all sides beneath the bathtub. It is recommended that the hot and cold supply lines terminate at 12" above the floor level or lower. The bathtub will connect to the hot and cold supply lines with a pair of 3/4" flexible hoses with 3/4" female hex ends. These flexible supply hoses included with the ADL Spa bathtub attach to the thermostatic valve.
7. **INSTALL THIS UNIT IN ACCORDANCE WITH THE CANADIAN ELECTRICAL CODE, PART 1**
INSTALLER CONFORMEMENT AU CODE CANADIEN DE L'ELECTRICITE, PREMIERE PARTIE
A licensed electrician shall install the power supply per the requirements of the National Electrical Code and the local authority having jurisdiction. Follow all safety requirements as referenced under **IMPORTANT SAFETY INSTRUCTIONS on Page 7**. The ideal location of the electrical outlets is on the end wall at the head end of the bathtub or back wall in the cabinet area beneath the bathtub. The power supply will then be accessible after final installation. The height of the GFCI outlet should be between local code minimum and 12" to facilitate access through the cabinet base. Before installing the bathtub, be sure that hot/cold cutoffs and electrical connections are installed where they can be easily accessed underneath the bathtub (see diagrams page 23).

USA

If the unit is equipped with both a pump and a blower. It requires either two dedicated properly grounded circuits rated **15Amp/120Volt**, each with a GFCI outlet and 15A circuit breaker, or one properly grounded circuit rated **30Amp/120Volt** with two separate GFCI outlets and a 30A circuit breaker.

NOTE: If the O³ Ozone Sanitation System option is included, the power connector for the ozone generator can use the remaining vacant socket.

CANADA

If the unit is equipped with both a pump **and** a blower. A **30Amp/125Volt** properly grounded and circuit breaker-protected line must be hard-wired into the unit's power junction box. The junction box is factory installed with two duplex GFCI outlets for use with the pump, blower and optional O³ Ozone sanitation system.

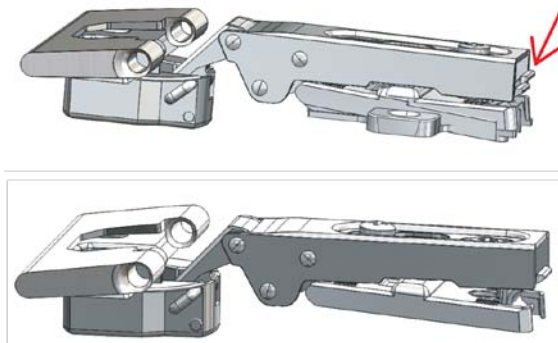
CONNECT ONLY TO A CIRCUIT PROTECTED BY A CLASS A GROUND FAULT CIRCUIT INTERRUPTER; CONNECT ONLY TO A BRANCH CIRCUIT PROTECTED BY AN OVERCURRENT PROTECTION DEVICE RATED NOT MORE THAN 30 A. BRANCHER SEULEMENT À UNE DÉRIVATION PROTÉGÉE PAR UN DISJONCTEUR DE FUITE À LA TERRE DE CLASSE A; BRANCHER À UNE DÉRIVATION PROTÉGÉE PAR UN DISPOSITIF DE PROTECTION CONTRE LES SURINTENSITÉS D'AU PLUS 30 A.

8. The cabinet base includes cutouts and clearances for easy retrofits. If the original bathtub has a drain on one end, the drain lines from the ADL Spa can pass through the clearances and cutouts to connect with the original drain and P-trap in the floor. For a new installation, the floor drain connections can be directly beneath overflow.

CABINET INSTALLATION

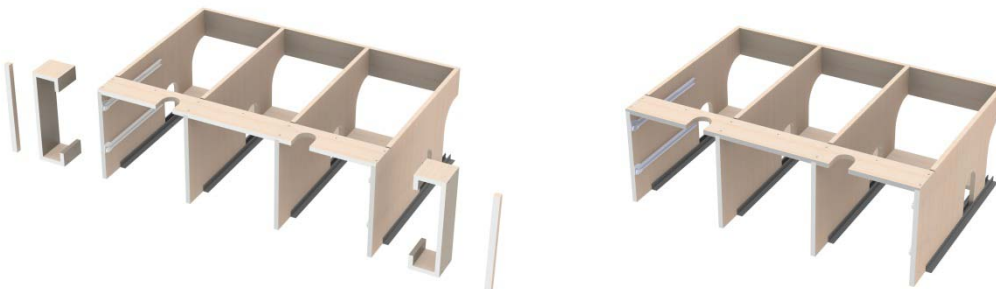


1. Remove the drawers and cabinet fronts. To remove the cabinet fronts, disengage the hinge with a tab at the back. Set them aside so they don't get damaged during installation.



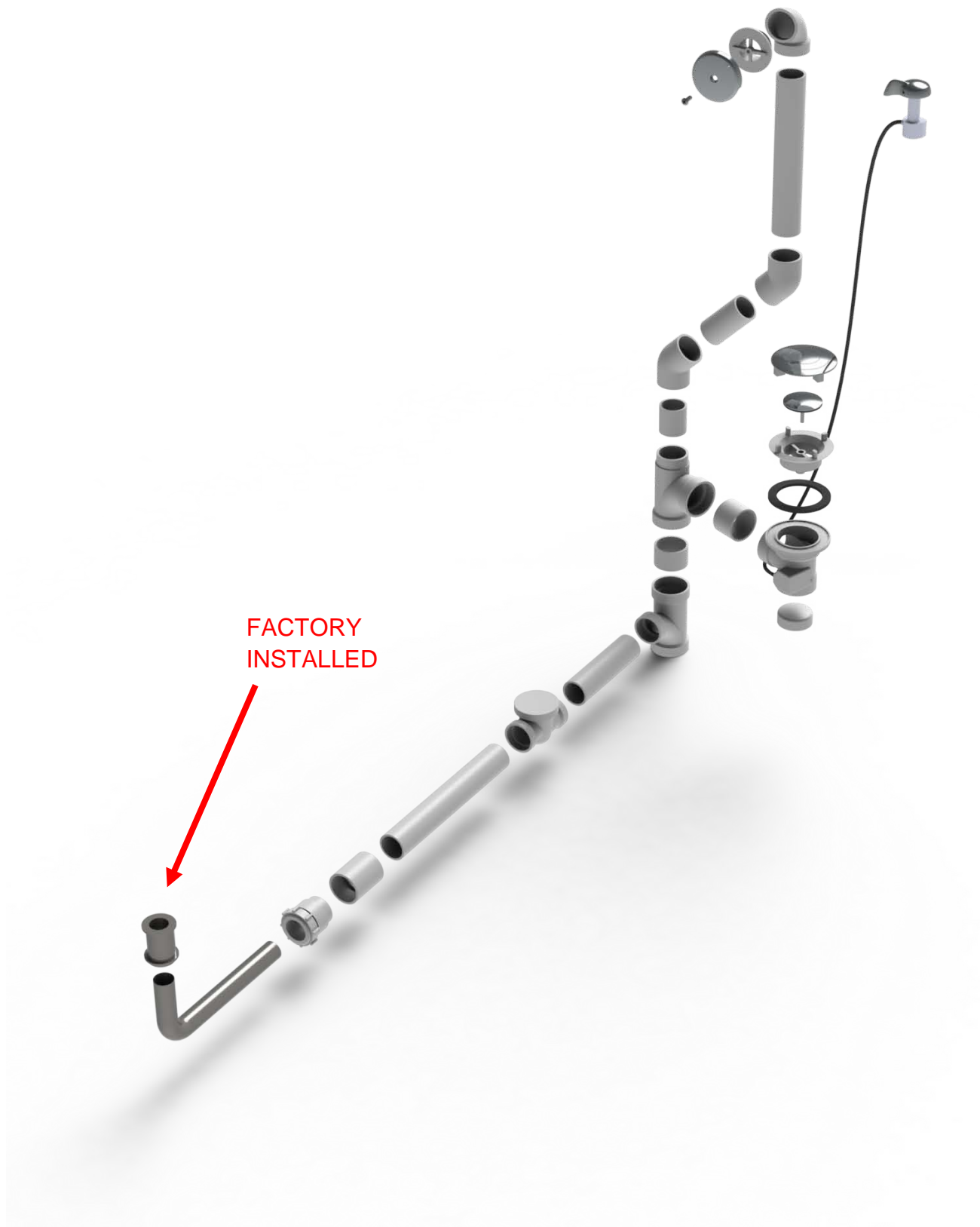
-- To reinstall, line up the front and push the back end back into position.

2. The cabinet has 6" side boxes to be removed before installation to increase maneuverability when moving into the framing pocket. They are to be reattached from the inside of the cabinet bays when the core is installed. The end pieces of 1x1 pine are made to be shaved down for adjustment if necessary.



3. If the floor is not level, shims within the U-channels can be used. Note: it is important that all four gables be firmly seated in the U-channels and be plumb and level for the door system and cabinet doors and drawers to look and work properly. Shims can also be used between the bathtub and cabinet base if needed.
4. Measure the vertical gables to ensure that they are plumb and 15-3/4" apart on center at the bottom of the front edges. This will impact the adjustment of the drawers and cabinet fronts.
5. Attach the plastic supports to the floor with screws or nails.

DRAIN AND WASTE/OVERFLOW INSTALLATION





DRAIN ASSEMBLY

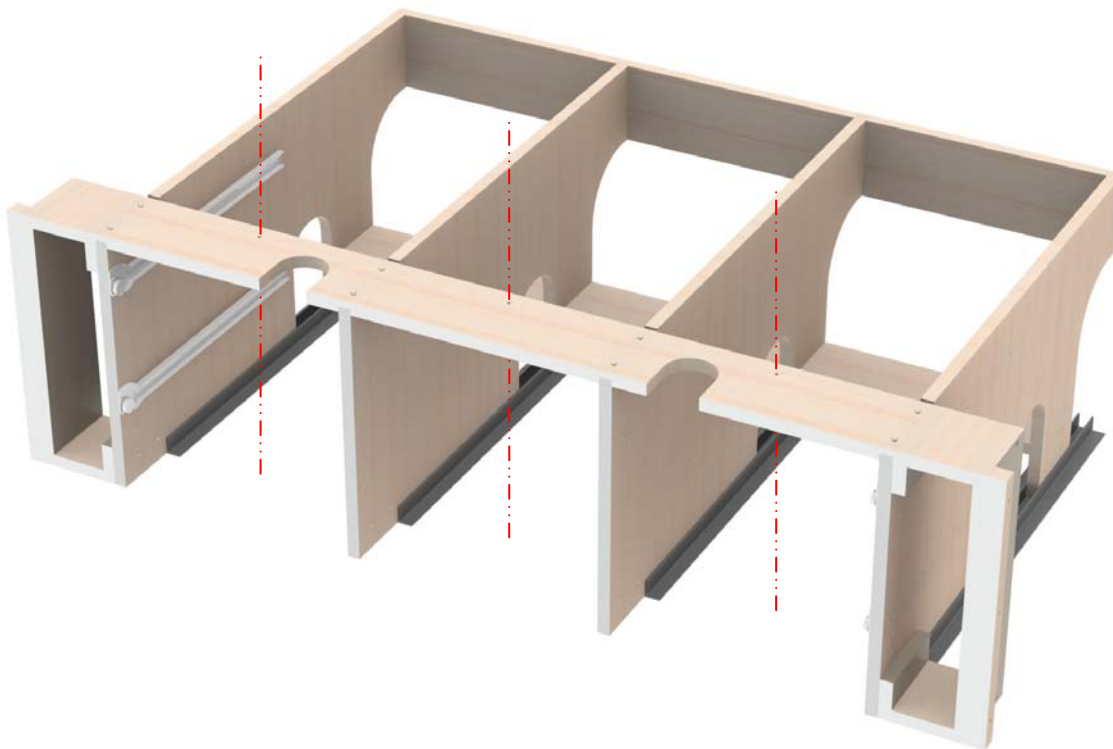
Stage 1: Install overflow elbow, main drain shoe, and door drain elbow on tub. Door drain 90° elbow is a threaded connection, so it is easiest when done with the tub overhanging the front of the cabinet by 10-12 inches. **DO NOT LIFT BATHTUB AT FRONT-TOP OF DOOR TRACK. DOING SO MAY TAKE THE TRACK OUT OF ALIGNMENT WHICH WILL RESULT IN DOOR LEAKS.**

Stage 2: Connect/cement fittings between overflow and drain shoe, and separately connect/cement fittings that will make up the door drain assembly.

Stage 3: Slip the plastic door drain assembly onto the chrome 90° elbow, and tighten down the drain bodies and overflow elbow.

Stage 4: Connect the plastic door drain assembly to the main drain assembly, and then tighten the plastic door drain assembly to chrome 90° connection. Install all trim pieces.

1. Connect the assembled drain and waste overflow system to the existing drain and P-trap. The cabinet base has cutouts that allow the assembly to connect to a pre-existing drain pipe at either end of the pocket. It is recommended to use a drain line cleanout for future maintenance.
2. With the pre-plumbed hot and cold supply lines prepared during steps of **PREPARING THE AREA**, connect the hot and cold lines making sure to connect them to the right incoming supply. The hoses are color-coded to assist with correct connections.
 - If the hot and cold lines are reversed, this may cause the valve to jam when turned on. See Below. Do not turn on water supply until all drain connections are complete.



With the tub in final position, run three screws through the holes pre-drilled above into the tub base.

Reinstall the door by following removal instructions in reverse as shown on page 2

TESTING THE AIR AND WATER JET SYSTEMS

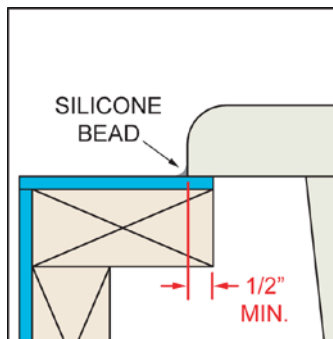
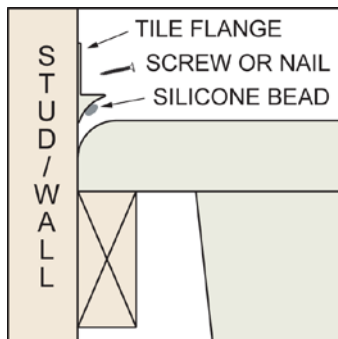
1. Fill the tub and after five minutes, check for leaks at all fittings, connections and door seal.

NOTE: The type of door seal design required for this application may require the hydrostatic pressure of a full bathtub to fully engage. A small amount of water may escape the seal during the fill, but any water that does escape during this process will all be captured by the door-track drain.

2. Turn the pump and blower on with the keypads inside the tub and let them run for at least five minutes. Check for leaks while the pump and blower are running and again after they have been turned off. Check by hand where a visual check is not possible.
3. Reinstall the access panel and door.

FINISHING THE BATHTUB INSTALLATION

1. For ALCOVE and CORNER installations, you must attach flange trim pieces to the side(s) and back of the tub on any edge that will be against a wall or framing:
 - a. Dry-fit the trim along all walls and miter-cut
 - b. Lay a bead of silicone on the flange trim radius where the trim will be attached
 - c. Press the trim onto the radius of the tub, and clean away excess silicone; tape or screw in place



2. Install all cabinet doors and drawers, and adjust the alignment as needed. The cabinet hinges have alignment screws to adjust pitch and gap distances between doors. The drawers have adjustment in the brackets that attach the front to shift left or right and up and down.
3. Install the aluminum strip along the front-bottom edge of the tub by running a bead of clear silicone in the inside corner on the taped side and pressing it on. The tape will hold the strip in place as the silicone cures.



POST-INSTALLATION CLEANING

WARNING:

1. **Do not**, under any circumstances use wire brushes, metal sponges, knives, steel wool or scouring pads on any part of the bathtub.
2. **Do not**, under any circumstances use powerful solvent such as acetone, lacquer, paint thinner, benzene or abrasive cleanser on any part of the bathtub.
3. **Do not** use ammonia or chlorine-based agents on any plated surface as they can delaminate the surface plating and void the warranty on the plated finish.

For a one time cleaning of the bathtub after installation, proceed as follows:

1. Remove any plaster and/or dabs of paint that have adhered to the surface by gently scraping them off with the sharpened edge of a suitable tool that made of a material that won't scratch the surface such as wood or plastic.
2. Oil or grease spots can be lifted with denatured alcohol.
3. Use liquid, non-bleach dishwashing detergent to remove any construction residue.
4. Lightly rubbing with a liquid cleaning compound (such as polishing compound used for cars), followed by a light application of liquid or paste wax, will restore luster to any dulled surface.
5. Clean plated surfaces with warm water only.

USER INSTRUCTIONS

There are serviceable parts in this system. All service, repairs and electrical wiring must be performed by a qualified service technician in accordance with all applicable local and national codes.

If this bathtub is equipped with the Best Bath Safety Plus Valve System, the deck-mounted thermostatic mixing valve has a cross-handle with a red safety-stop button. This safety-stop limits rotation of the thermostatic mixing valve from turning beyond 100° F (38° C) without pressing the button. For temperatures above 100° F (38° C), press the button, and continue to turn the handle.

OPERATING INSTRUCTIONS FOR YOUR BATHTUB

Your ADL Spa bathtub was specifically designed to deliver dependable operation. All ADL Spa hydromassage system fittings are manufactured of strong, highly inert brass and PVC materials to prevent water discoloration and ensure long life. The electrical components also conform to all of the applicable safety standards. Each system is thoroughly tested and inspected before leaving the factory to ensure your continued enjoyment and peace of mind.

An automatic drying cycle that lasts one minute will start 20 minutes after the blower is turned off. There is a spring-check valve at each air jet, but should water somehow still get in the lines, this drying cycle will blow it out.

Do not add any liquids or powders to the water, especially foamy, bubbly or oily types.

Do not use the bathtub with the hydro massage system activated if you have taken alcohol, drugs or medication, which can greatly increase the risk of fatal hyperthermia.

Limit your first session to no more than **10 minutes**. Use of the bathtub too long at an excessively warm temperature for your body may induce hyperthermia.

Hyperthermia occurs when the internal temperature of the body reaches a level above the normal body temperature of 37°C (98.6°F). This level may vary by individuals and conditions. Consult your doctor regarding a safe temperature for your use of the bathtub. The symptoms of hyperthermia include a change in the internal temperature of the body, dizziness, lethargy, drowsiness and fainting. The effects of hyperthermia are as follows:

1. Failure to perceive heat
2. Failure to recognize the need to exit the hydromassage bathtub
3. Unawareness of impending hazard
4. Fetal damage in pregnant women
5. Physical inability to exit the bathtub
6. Unconsciousness resulting in the danger of drowning

If you are pregnant, or you think you may be pregnant, or if you are under a doctor's care, consult your physician for guidelines as to the appropriate water temperature and the duration of each use.

IMPORTANT INSTRUCTIONS

CAUTION: DO NOT OPERATE THE HYDRO MASSAGE SYSTEM WITH ANY PARTS OR FITTINGS REMOVED.

1. Use this unit only for its intended use as described in the manual. Do not use attachments not recommended by the manufacturer. Any improper installation or misuse of the equipment may result in injury to user and will void the warranty.
2. To avoid injury, exercise care when entering or exiting the hydro massage bathtub as the floor may be slippery.
3. Because of the risk of hyperthermia and drowning, **do not** use the hydro massage bathtub after strenuous exercise.
4. Because of the risk of electric shock, no appliances should be within 1.5 meters (5 feet) of the bathtub, i.e., hair dryer, lamp, TV, radio, etc.
5. **Do not** open door until **all** water has been drained from the bathtub.

OPERATING OPTIONAL AIR AND WATER JET SYSTEMS

1. Enter the tub and close the door to its locked position.
1. Turn the drain handle to close the drain.
2. Fill to the water level that is comfortable for you, but at least one inch above the highest water jet.
3. Read and follow the information regarding hyperthermia. However, under no circumstances use a bathtub with water above 104°F (40°C).
4. To operate the optional water jets, press the on button on the *Water* key pad on the side of the tub.
5. To increase or decrease the pressure from all the jets, turn the air volume control knob to the open or closed position to allow more or less air to be drawn in to the jets.
6. To increase the pressure from an individual jet, turn the face of the jet counter-clock wise to allow more water to the jet.
7. To operate the optional air jets, press the buttons on the *Air* key pad on the side of the tub in the following ways:
 - on/off** Button: The blower turns on and off.
 - +/-** Up/down Button: The speed of the blower increases/decreases until the button is released.
 - +-** Pulsation button:
 - a. The speed of the blower varies gradually from low to high and back to low.
 - b. The blower turns off and on, then off again.
8. The blower returns to maximum speed.
9. Unless the tub is in use, always leave the door open to maintain the integrity of the door seal.

DOOR SEAL AND DOOR LEAKS

If a small leak has been detected around the bathtub door, check closely for any accumulation of dirt or debris. Any small collection of either on the door seal or where the seal comes in contact with the door jamb could result in a minor leak through the door seal:

1. Before filling the bathtub with water, be sure to wipe down the door seal using a damp soft cloth, as well as the surface on the door jamb that will come in contact with the seal.
2. It is especially **IMPORTANT** to wipe down the door seal and door jamb after each use in order to maintain the integrity of the seal.

NOTE: If there are any contaminants, i.e. dirt, dust, sand, etc. or the buildup of soap scum, calcium, etc. on the seal and/or the door jamb it will have an effect on the integrity of the water seal.

REGULAR CLEANING

Regular care of the bathtub will keep it clean and working at its best. This care should include the bathtub, the trim and fittings. No maintenance is required for the air blower and/or water pump.

Because of the detrimental effects that mineral deposits, soap scum and bacteria have on finished surfaces, it is important to keep your bathtub and the fixtures clean on a regular basis. The best way to counteract the soiling and often time corrosive action of these residues is to prevent water from remaining on any finished surface.

For regular maintenance-type cleaning, proceed as follows once a week:

1. Check for stubborn spots. Oily or greasy spots can be lifted with denatured alcohol.
2. In order to keep the seal and the door jamb clean and free of dirt or debris of any kind, it is very important that the door jamb and the seal to be cleaned with a mild dishwashing detergent and warm water using a soft cloth.
3. Wash all exposed surfaces of the bathtub.
4. Rinse and wipe dry.

WATER JET SYSTEM CLEANING

Once a month, clean the entire water jet system using liquid automatic dishwashing detergent, which will remove body and bath oils, soap residue, and other sources that can contribute to bacterial growth in the water jet system.

1. Fill the bathtub to one inch above the highest jet and add one spoonful of liquid automatic dishwashing detergent, turn on the water jet system for 15 minutes, and then drain the bathtub.
2. Now refill the bathtub with only fresh water and run the system for another 15 minutes to rinse out the system, again drain the bathtub and wipe dry.



www.best-bath.com

LIMITED LIFETIME WARRANTY

Best Bath Systems, Inc. warrants to the original consumer that Best Bath's fiberglass reinforced ADL Spa Bathtub will be free from manufacturing defects for as long as the original consumer occupies the residence in which the bathing unit is installed.

If a manufacturing defect should become apparent, Best Bath Systems, Inc. following investigation and verification of claim, will either repair or replace the item at our discretion. The Best Bath warranty obligation in regard to equipment and accessories is limited to any warranty extended to Best Bath Systems, Inc. by the manufacturer of the equipment or accessories.

Limits to Coverage

Section I.

- When products are shipped by common carrier, the responsibility for the unit's safe delivery is assumed by the carrier. It is the responsibility of the consignee to inspect the container and report any damage to the freight company within their allotted time and to Best Bath Systems Customer Service within five (5) business days of delivery.
- Abusive treatment, misuse, normal wear, accidents, fire, theft, lost materials, improper installation, damage to product due to shipping, storage or handling, reactions caused by accessories or cleaning materials, mis-drilled holes, negligence, construction damage, punctures from dropped items into the bathtub, repairs or alterations not authorized in writing by Best Bath Systems, and other non-manufacturer issues are not covered by this warranty. There will be a charge for replacement parts or replacement of the component if the defective item is returned for any of the reasons listed above.
- The use of permanent non-slip type appliques or rubber bath mats that are left in place after use for over 24 hours may result in blistering of the surface which is not covered under our warranty.
- Best Bath Systems will under no circumstances be responsible for any water damage to structures or property or damage to the bathtub's Hydro Massage Systems. Best Bath Systems will assume no responsibility for the loss of the system, inconvenience due to loss, damage to real or personal property or any other consequential damage. Best Bath Systems will not be liable for any incidental expenses or material charges in connection with removal or replacement of the purchased part or any part or parts of the System.
- Best Bath Systems warrants certain components to be free from defects in workmanship and material under normal use and conditions for a period of five (5) year for parts, including the unit hardware, i.e. hinge and door latch mechanism from the date of original purchase by the owner/end-user.
See Section II for DOOR SEAL warranty details

- Best Bath Systems does not warrant the installation of their bathtub including the plumbing or electrical connection installation. Improper or negligent installation of the product may cause the product or the system to malfunction. Such problems are not covered by the warranty, expressed or implied, given by or otherwise imposed by law on Best Bath Systems.
- Best Bath Systems warrants the water jet pump to be free of defects in the manufacturing, material and workmanship for a period of ten (10) years, the electronic controls and the plating of apparent components for a period of 1 (one) year from the date of original purchase by the owner/end-user.
- Best Bath Systems warrants the air blower to be free of defects in the manufacturing, material and workmanship for a period of three (3) years, the electronic controls and the plating of apparent components for a period of one (1) year from the date of original purchase by the owner/end-user.
- Best Bath Systems warrants the O³ ozone generator to be free of defects in the manufacturing, material and workmanship for a period of one (1) year, the electronic controls and the plating of apparent components for a period of one (1) year from the date of original purchase by the owner/end-user.
- Should service be required by reason of any defect or malfunction of the product during the warranty period, Best Bath Systems will replace or repair the part or product without charge subject to verification of the defect or malfunction.
- Best Bath Systems reserves the sole authority to make any type of warranties or representations concerning Best Bath Systems or its products and will not be responsible for any warranties or representations made by any outside source, including dealers, retailers, distributors or contractors.
- This is the only warranty expressed or implied by Best Bath Systems. Warranties implied under State Law, including any implied warranty of merchantability or fitness for a particular purpose shall be limited to: five (5) year for parts, including the unit hardware, i.e. hinge, handle mechanism from the date of original purchase by the owner/end-user.
- If a replacement of the warranted item is determined to be necessary, this warranty does not cover labor costs involved in demolition and removal of item or installation of the replacement.

Section II. DOOR SEAL

Best Bath Systems warrants the door seal for the life of the unit under normal use and conditions. This warranty shall not apply to any failure resulting from negligence, abuse, misuse, misapplication, alteration or modification or improper maintenance. The replacement door seal will be issued to the end user and it will be the responsibility of the end user to determine the means of installation. Best Bath Systems will not be liable for any incidental expenses or material charges in connection with removal or replacement of the door seal.

Filing a Claim

To file a claim, contact Best Bath Systems Customer Service/Warranty Department by phone, email, or mail.

Please contact:

National Customer Service Supervisor
Best Bath Systems, Inc.
723 Garber St.
Caldwell, ID 83605

Phone: (208) 433-6650 Toll free: (866) 433-6650

Fax: (208) 333-8657 Toll free: (866) 333-8657

Email: warranty@best-bath.com Web Site: www.best-bath.com

The following information is necessary to process your claim:

1. Name, address, email and phone number
2. Sales Order number, Invoice number, Purchase Order from the original customer, or some documentation that reflects original date of purchase
3. Description of damage and repair requested

State laws relating to this warranty

Some states laws prohibit limitations on warranties. In any case where a portion of this warranty is found to be not legal or conflicting with any state law, that portion of this warranty is voided but all other portions remain valid.

Modifications to this Warranty

This document supersedes all previous warranties written, verbal, or implied issued by Best Bath Systems, Inc., Best Bath Systems, Inc. reserves the right to modify or change this warranty in its entirety at any time without prior notification. Effective date of this warranty is 06/01/2009.